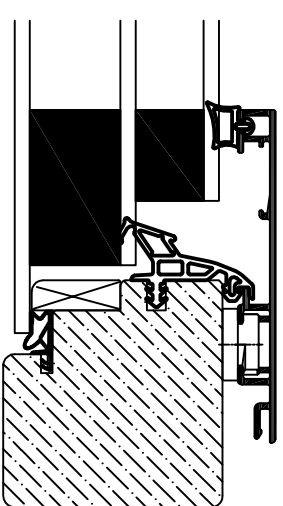
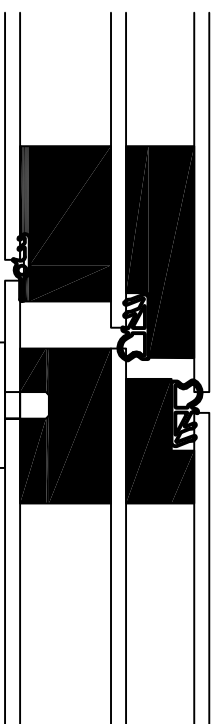
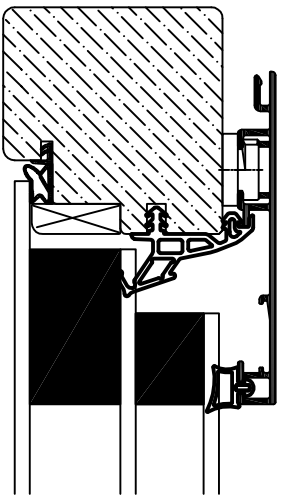
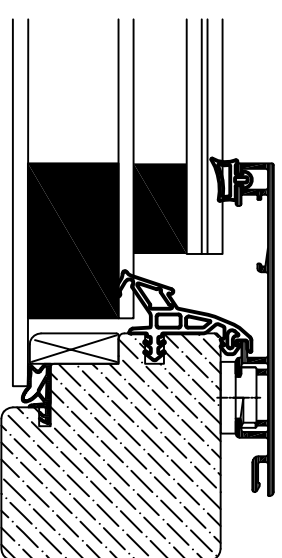
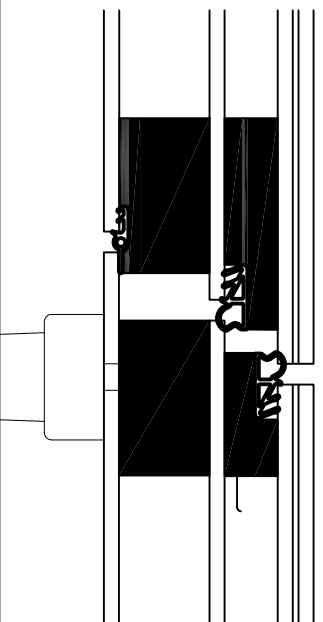
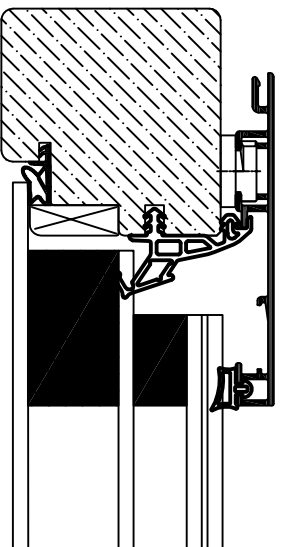


Glas 4/18/4/24/4



Glas 44.2/14/4/24/4



Technische Aenderungen vorbehalten - Dessin technique sous r serve de modifications de Clarafenster AG

Coupe avec verre standard et verre feuillet 

Schnitt mit Standard Glas und VSG

Masstab

1:2

Ersteller

Rbi

10.2016

 nderung

Zeichnungsnummer

S025

Format

A4



CLARAFENSTER AG Tel: 061 717 14 79